

Quantock quiz - hidden



1. Which famous literary local once brandished this instrument, and what is it? (*and in which Somerset museum can it be found?*)
2. Which location on the Quantocks is shown here dusted with snow?



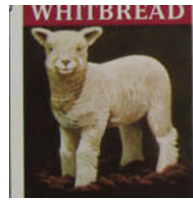
(a)



(b)



(c)



(d)

3. Can you tell these Quantock pubs from their pub signs? (*we've removed some important details!*)



(e)



(f)

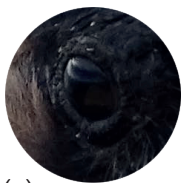


(g)

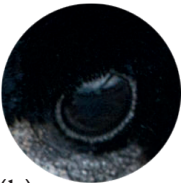


(h)

4. These ritual protection symbols found in some historic places supposedly had the power to avert which evil influence?



(a)



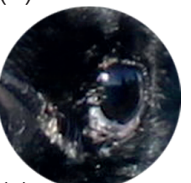
(b)



(c)



(d)



(e)



(f)



(g)



(h)

5. Can you tell each corvid pictured from just their eyes?
6. At over 1km long, with an average gradient of 12% which combe to Weacombe Hill is pictured?

